

DEVELOPMENT LAYOUT

When designing Keepers Green, our award winning architects were commissioned to place people at the heart of this new neighbourhood. One and two bedroom apartments for first time buyers, professionals, retirees or downsizers, townhouses, three and four-bedroom detached and semi-detached homes for local couples, growing families or those new to the area: Keepers Green will become a multi-generational neighbourhood with a real sense of pride in their community. The picturesque tree-lined setting with its locally-inspired character homes and communal cricket ground blends seamlessly with its green surroundings, creating a traditional village feel, with a thriving city centre close by. Keepers Green offers people a chance to lay the foundations for a secure, happy future, a delightful new address for generations to come.



THE HORSHAM

PLOTS 53, 63, 64, 66-77,
111, 112, 115-118, 138 & 139



Computer generated image depicts plots 138 & 139.

3 double bedroom home*

- Terraced homes
- Kitchen/dining room with utility room and downstairs cloakroom
- Double doors leading out to the rear garden
- Separate living room
- Family bathroom
- En-suite and fitted wardrobes to master bedroom
- Integral garage and driveway parking
- Oversized windows maximising light

*Plots 66, 70, 71, 74, 75, 77, 118 and 139 are end-terrace. Plots 53, 63, 64, 67-69, 72, 73, 76, 111, 112, 115, 116, 117 and 138 are mid-terrace.

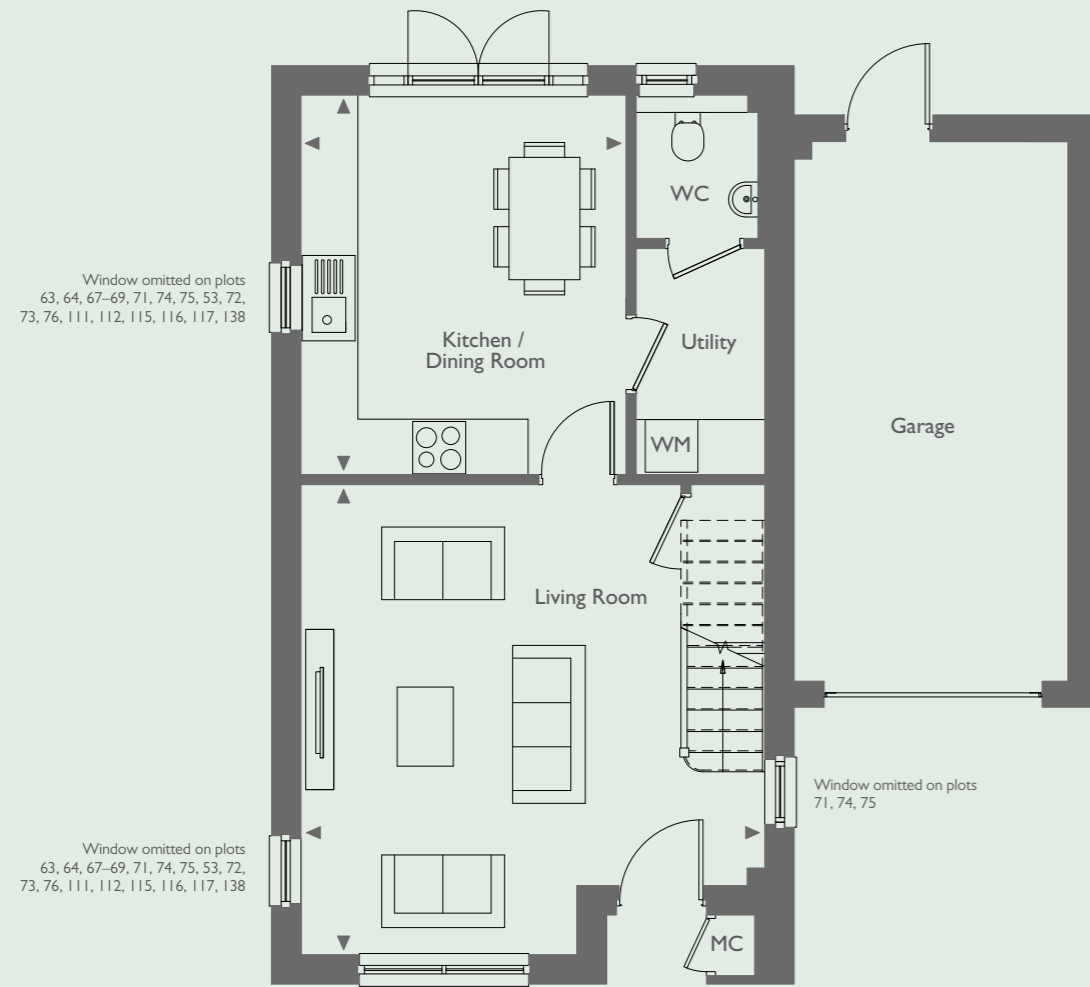
Brought to you in
partnership by:



keepers-green.co.uk

01243 957 646 keepersgreen@hill.co.uk

Plots 63, 66, 69, 72, 74, 76, 112, 116, 118 and 139 are handed to the floor plans shown.



GROUND FLOOR

DIMENSIONS
PLOTS 53, 63, 64, 67, 68, 69, 72, 73, 76,
111, 112, 115, 116, 117, 138

Kitchen/Dining Room	4.30m x 3.70m	14'1" x 12'1"
Living Room	5.30m x 5.30m	17'4" x 17'4"

DIMENSIONS
PLOTS 66, 70, 71, 74, 75, 77, 118, 139

Kitchen/Dining Room	4.30m x 3.70m	14'1" x 12'1"
Living Room	5.35m x 5.30m	17'5" x 17'4"

KEY: W: Wardrobe ST: Store Cupboard WM: Washing Machine MC: Meter Cupboard ◀: Depicts where measurements have been taken from - - - - : Depicts reduced ceiling height



FIRST FLOOR

DIMENSIONS
PLOTS 53, 63, 64, 67, 68, 69, 72, 73,
76, 111, 112, 115, 116, 117, 138

Master Bedroom	4.75m x 4.15m	15'6" x 13'6"
Bedroom 2	4.85m x 2.95m	15'9" x 9'7"
Bedroom 3	5.20m x 3.10m	17'1" x 10'2"

DIMENSIONS
PLOTS 66, 70, 71, 74, 75, 77, 118, 139

Master Bedroom	4.75m x 4.15m	15'6" x 13'6"
Bedroom 2	4.90m x 2.95m	16'1" x 9'7"
Bedroom 3	5.20m x 3.10m	17'1" x 10'2"

Floor plans shown are approximate measurements only. Exact layouts and sizes may vary. All measurements may vary within a tolerance of ± 50mm and are not intended to be used for carpet sizes, appliance sizes or items of furniture. Furniture layouts are indicative only. Kitchen layouts are indicative only, please ask one of our sales executives for further information.