

# DEVELOPMENT LAYOUT

When designing Keepers Green, our award winning architects were commissioned to place people at the heart of this new neighbourhood. One and two bedroom apartments for first time buyers, professionals, retirees or downsizers, townhouses, three and four-bedroom detached and semi-detached homes for local couples, growing families or those new to the area: Keepers Green will become a multi-generational neighbourhood with a real sense of pride in their community. The picturesque tree-lined setting with its locally-inspired character homes and communal cricket ground blends seamlessly with its green surroundings, creating a traditional village feel, with a thriving city centre close by. Keepers Green offers people a chance to lay the foundations for a secure, happy future, a delightful new address for generations to come.



## THE MAYFIELD

PLOTS 1-4, 7, 52, 54,  
119, 120-124



Computer generated image depicts plot 119.

### 4 bedroom home\*

- Detached or terraced homes
- Open plan kitchen/dining room with utility room and garden room
- Separate living room
- Double doors leading out to the rear garden from garden room
- Downstairs WC
- Family bathroom
- En-suite and fitted wardrobes to master bedroom
- Integral garage and driveway parking
- Oversized windows maximising light
- Upgraded specification

\*Plot 7 is detached. Plots 1, 4, 52, 54, 119 and 124 are end-terrace.  
Plots 2, 3, 120, 121, 122 and 123 are mid-terrace.

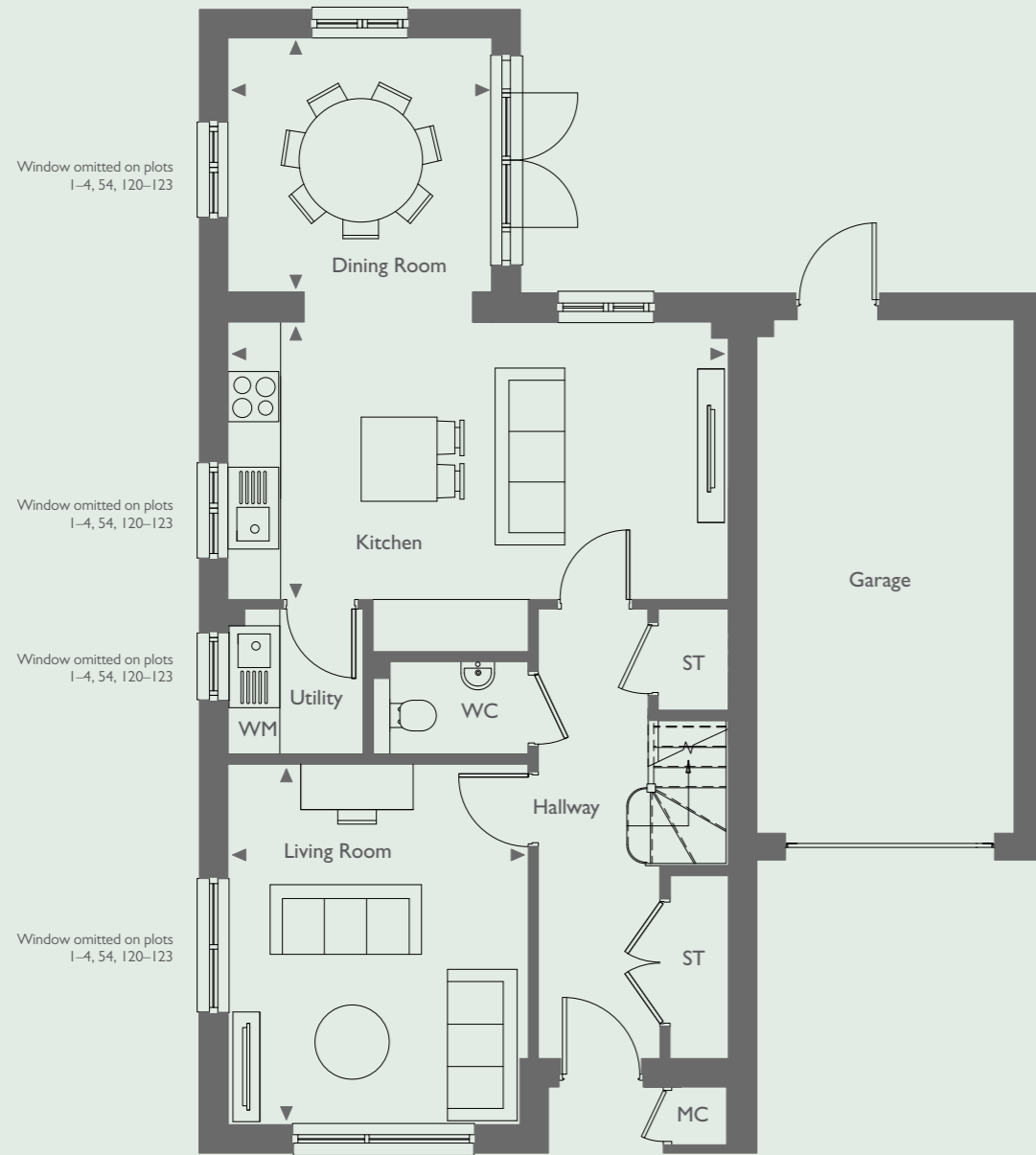
Brought to you in  
partnership by:



[keepers-green.co.uk](http://keepers-green.co.uk)

01243 957 646 [keepersgreen@hill.co.uk](mailto:keepersgreen@hill.co.uk)

Plots 1, 3, 52, 120, 122 and 124 are handed to the floor plans shown.



### GROUND FLOOR

#### DIMENSIONS PLOT 7

Kitchen	5.90m x 3.30m	19'4" x 10'8"
Dining Room	3.10m x 3.00m	10'2" x 9'8"
Living Room	4.30m x 3.55m	14'1" x 11'6"

#### DIMENSIONS PLOTS 1-4, 52, 54, 119-124

Kitchen	5.90m x 3.30m	19'4" x 10'8"
Dining Room	3.10m x 3.00m	10'2" x 9'8"
Living Room	4.25m x 3.55m	13'9" x 11'6"

KEY: W: Wardrobe ST: Store Cupboard WM: Washing Machine MC: Meter Cupboard ◀: Depicts where measurements have been taken from - - - - : Depicts reduced ceiling height



### FIRST FLOOR

#### DIMENSIONS PLOT 7

Master Bedroom	4.45m x 3.20m	14'6" x 10'5"
Bedroom 2	4.75m x 3.00m	15'6" x 9'8"
Bedroom 3	3.65m x 3.30m	12'0" x 10'8"
Bedroom 4	2.95m x 2.60m	9'7" x 8'5"

#### DIMENSIONS PLOTS 1-4, 52, 54, 119-124

Master Bedroom	4.45m x 3.70m	14'6" x 12'1"
Bedroom 2	4.75m x 3.00m	15'6" x 9'8"
Bedroom 3	3.70m x 3.30m	12'1" x 10'8"
Bedroom 4	2.95m x 2.60m	9'7" x 8'5"

Floor plans shown are approximate measurements only. Exact layouts and sizes may vary. All measurements may vary within a tolerance of ± 50mm and are not intended to be used for carpet sizes, appliance sizes or items of furniture. Furniture layouts are indicative only. Kitchen layouts are indicative only, please ask one of our sales executives for further information.