

DEVELOPMENT LAYOUT

When designing Keepers Green, our award winning architects were commissioned to place people at the heart of this new neighbourhood. One and two bedroom apartments for first time buyers, professionals, retirees or downsizers, townhouses, three and four-bedroom detached and semi-detached homes for local couples, growing families or those new to the area: Keepers Green will become a multi-generational neighbourhood with a real sense of pride in their community. The picturesque tree-lined setting with its locally-inspired character homes and communal cricket ground blends seamlessly with its green surroundings, creating a traditional village feel, with a thriving city centre close by. Keepers Green offers people a chance to lay the foundations for a secure, happy future, a delightful new address for generations to come.



THE ARUNDEL

PLOTS 157-159



3 bedroom home*

- Detached or semi-detached homes
- Open plan kitchen/dining room
- Separate living room
- Double doors leading out to the rear garden from kitchen/dining room and living room
- Downstairs cloakroom
- Family bathroom
- En-suite and fitted wardrobes to master bedroom
- Two allocated parking spaces adjacent to each home
- Oversized windows maximising light

*Plots 157 and 158 are semi-detached. Plot 159 is detached.

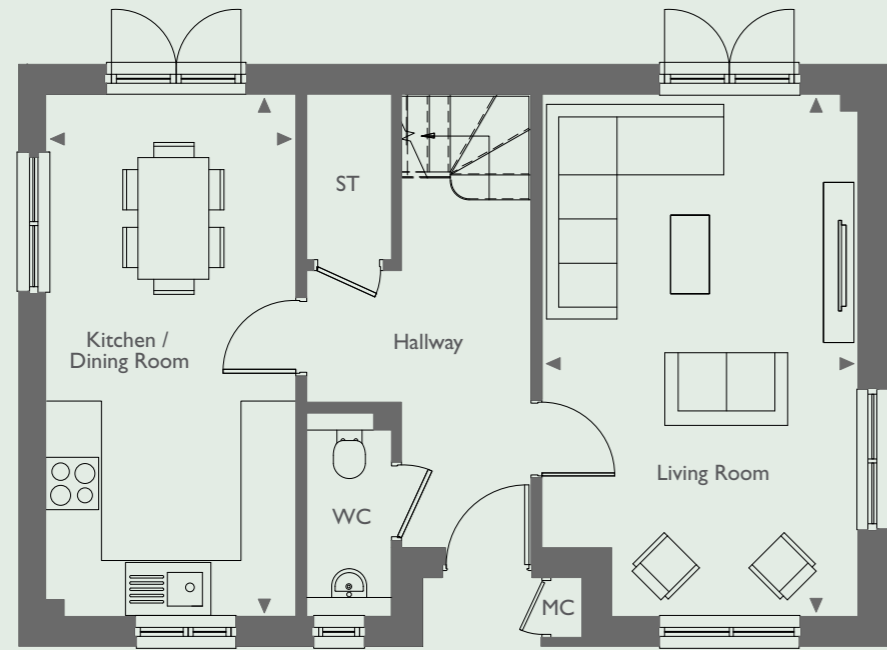
Brought to you in
partnership by:



keepers-green.co.uk

01243 957 646 keepersgreen@hill.co.uk

Plot 157 is handed to the floor plans shown.



GROUND FLOOR

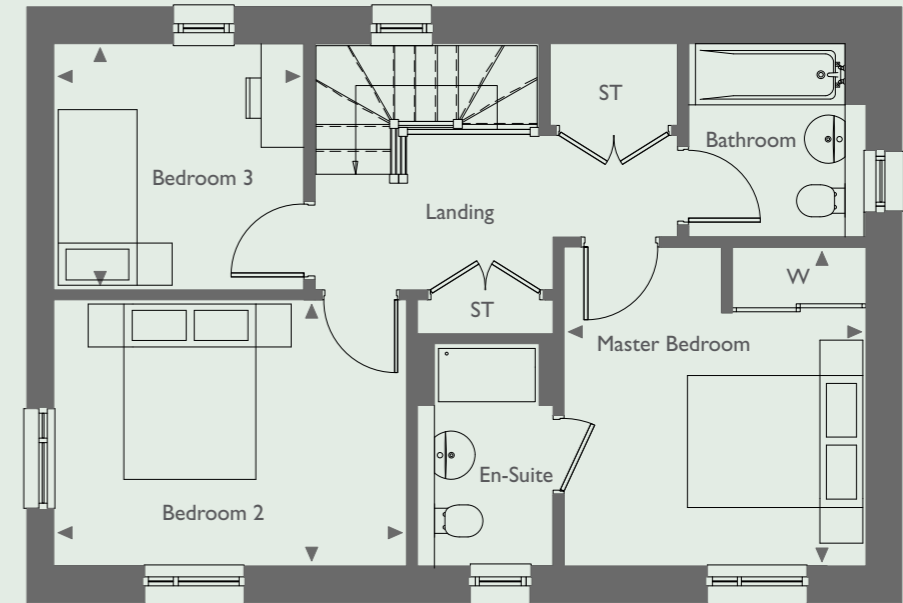
**DIMENSIONS
PLOTS 157 & 158**

Kitchen/Dining Room	5.95m x 2.75m	19'5" x 9'0"
Living Room	5.95m x 3.60m	19'5" x 11'8"

**DIMENSIONS
PLOT 159**

Kitchen/Dining Room	5.95m x 2.75m	19'5" x 9'0"
Living Room	5.95m x 3.55m	19'5" x 11'6"

KEY: W: Wardrobe ST: Store Cupboard WM: Washing Machine MC: Meter Cupboard ◀: Depicts where measurements have been taken from



FIRST FLOOR

**DIMENSIONS
PLOTS 157 & 158**

Master Bedroom	3.75m x 3.45m	12'3" x 11'3"
Bedroom 2	3.90m x 3.05m	12'8" x 10'0"
Bedroom 3	2.80m x 2.75m	9'2" x 9'0"

**DIMENSIONS
PLOT 159**

Master Bedroom	3.75m x 3.40m	12'3" x 11'2"
Bedroom 2	3.90m x 3.05m	12'8" x 10'0"
Bedroom 3	2.80m x 2.75m	9'2" x 9'0"

Floor plans shown are approximate measurements only. Exact layouts and sizes may vary. All measurements may vary within a tolerance of ± 50mm and are not intended to be used for carpet sizes, appliance sizes or items of furniture. Furniture layouts are indicative only. Kitchen layouts are indicative only, please ask one of our sales executives for further information.