

DEVELOPMENT LAYOUT

When designing Keepers Green, our award winning architects were commissioned to place people at the heart of this new neighbourhood. One and two bedroom apartments for first time buyers, professionals, retirees or downsizers, townhouses, three and four-bedroom detached and semi-detached homes for local couples, growing families or those new to the area: Keepers Green will become a multi-generational neighbourhood with a real sense of pride in their community. The picturesque tree-lined setting with its locally-inspired character homes and communal cricket ground blends seamlessly with its green surroundings, creating a traditional village feel, with a thriving city centre close by. Keepers Green offers people a chance to lay the foundations for a secure, happy future, a delightful new address for generations to come.



THE BURGESS

PLOTS 78, 79, 127-131



Computer generated image depicts plots 78 & 79.

2 double bedroom home*

- Semi-detached or terraced homes
- Open-plan kitchen/dining/living room
- Double doors leading out to the rear garden
- Downstairs cloakroom
- Family bathroom
- En-suite and fitted wardrobes to master bedroom
- Allocated parking space†
- Oversized windows maximising light

* Plots 78, 79, 127-130 are semi-detached. Plot 131 is an end-terrace.
† Plots 78, 79 and 127 have one allocated parking space. Plots 128 - 131 have two allocated parking spaces.

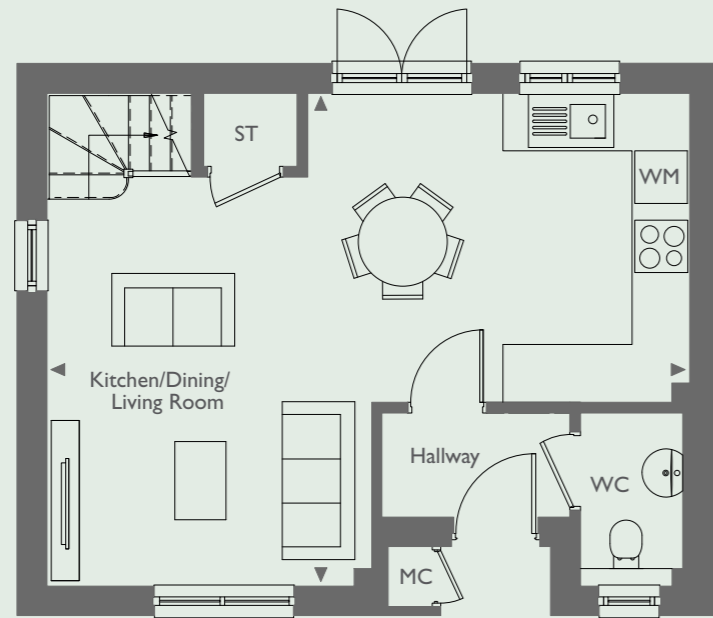
Brought to you in partnership by:



keepers-green.co.uk

01243 957 646 keepersgreen@hill.co.uk

Plots 79, 128 and 130 are handed to the floor plans shown.



GROUND FLOOR

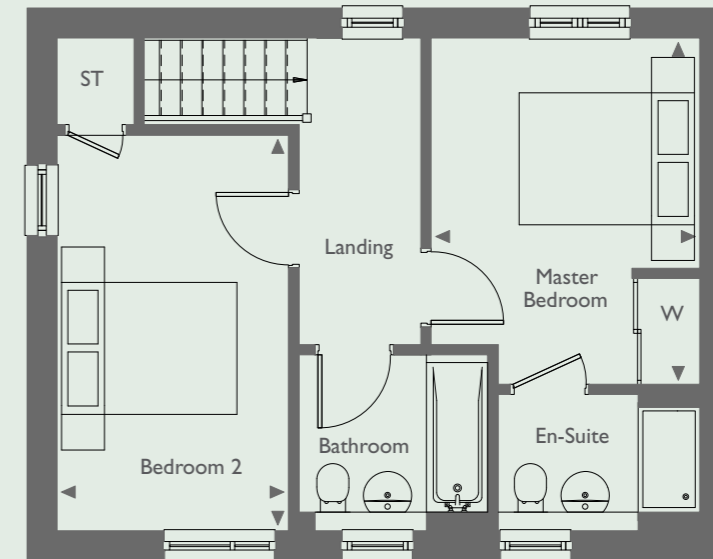
DIMENSIONS
PLOTS 78, 79, 127-130

Kitchen/Dining/Living Room 7.30m x 5.60m 23'9" x 18'4"

DIMENSIONS
PLOT 131

Kitchen/Dining/Living Room 7.55m x 5.40m 24'8" x 17'7"

KEY: W: Wardrobe ST: Store Cupboard WM: Washing Machine MC: Meter Cupboard ◀: Depicts where measurements have been taken from



FIRST FLOOR

DIMENSIONS
PLOTS 78, 79, 127-130

Master Bedroom 3.95m x 3.05m 13'0" x 10'0"

Bedroom 2 5.20m x 2.65m 17'1" x 8'7"

DIMENSIONS
PLOT 131

Master Bedroom 3.70m x 3.05m 12'1" x 10'0"

Bedroom 2 4.30m x 2.85m 14'1" x 9'3"

Floor plans shown are approximate measurements only. Exact layouts and sizes may vary. All measurements may vary within a tolerance of ± 50mm and are not intended to be used for carpet sizes, appliance sizes or items of furniture. Furniture layouts are indicative only. Kitchen layouts are indicative only, please ask one of our sales executives for further information.