

DEVELOPMENT LAYOUT

When designing Keepers Green, our award winning architects were commissioned to place people at the heart of this new neighbourhood. One and two bedroom apartments for first time buyers, professionals, retirees or downsizers, townhouses, three and four-bedroom detached and semi-detached homes for local couples, growing families or those new to the area: Keepers Green will become a multi-generational neighbourhood with a real sense of pride in their community. The picturesque tree-lined setting with its locally-inspired character homes and communal cricket ground blends seamlessly with its green surroundings, creating a traditional village feel, with a thriving city centre close by. Keepers Green offers people a chance to lay the foundations for a secure, happy future, a delightful new address for generations to come.



THE RYE

PLOTS 55, 56, 58-62, 65,
81-84, 88, 94, 108-110,
113, 125, 126, 134-137



Computer generated image depicts plots 110 and 111.

3 bedroom home*

- Detached, semi-detached or terraced homes
- Open plan kitchen/dining room with utility room and downstairs cloakroom
- Separate living room
- Double doors leading out to the rear garden from kitchen/dining room
- Family bathroom
- En-suite and fitted wardrobes to master bedroom
- Parking on private driveway
- Oversized windows maximising light

*Plots 94, 134-136 are detached. Plots 55, 56, 58-61, 81, 82-84, 88, 108, 109, 125 and 126 are semi-detached. Plots 62, 65, 110, 113 and 137 are end-terrace.

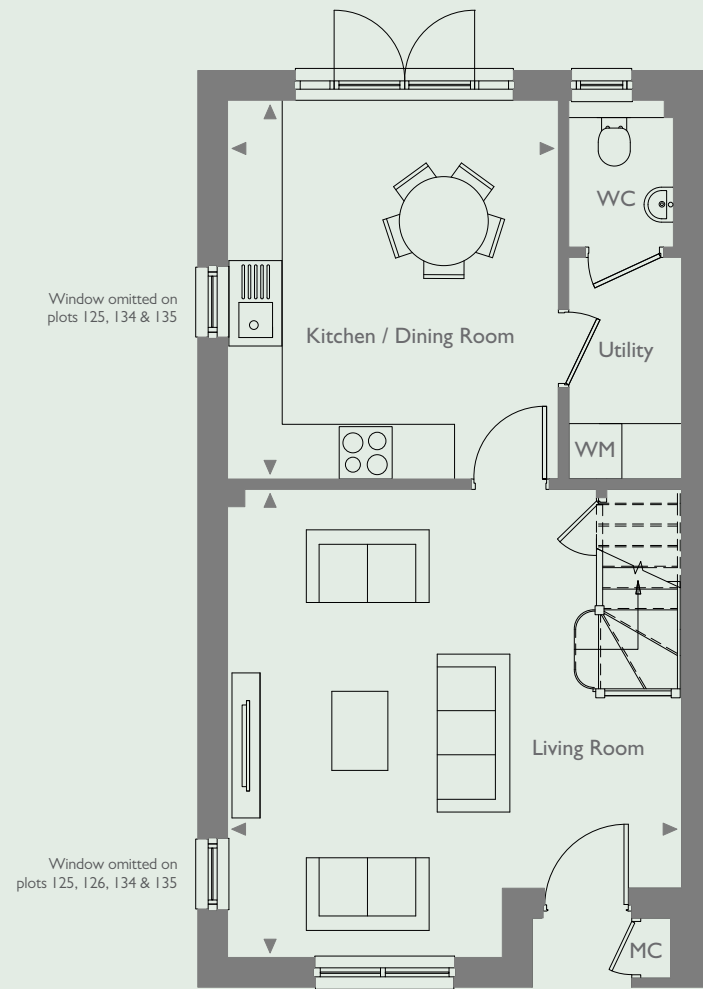
Brought to you in partnership by:



keepers-green.co.uk

01243 957 646 keepersgreen@hill.co.uk

Plots 55, 58, 60, 62, 82, 84, 94, 109, 113 and 126 are handed to the floor plans shown.



GROUND FLOOR

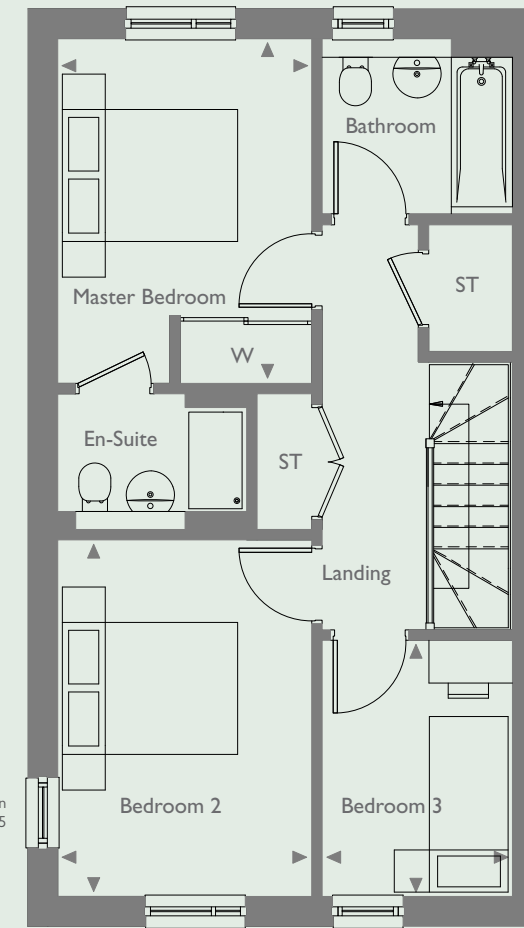
DIMENSIONS
PLOTS 94, 134-136

Kitchen/Dining Room	4.30m x 3.90m	14'1" x 12'8"
Living Room	5.35m x 5.250m	17'5" x 17'2"

DIMENSIONS
PLOTS 7, 55, 56, 58-62, 65, 81-84, 88,
108-110, 113, 114, 125, 126 & 137

Kitchen/Dining Room	4.30m x 3.80m	14'1" x 12'5"
Living Room	5.35m x 5.20m	17'5" x 17'1"

KEY: W: Wardrobe ST: Store Cupboard WM: Washing Machine MC: Meter Cupboard ◀: Depicts where measurements have been taken from



FIRST FLOOR

DIMENSIONS
PLOTS 94, 134-136

Master Bedroom	3.90m x 3.00m	12'8" x 9'8"
Bedroom 2	4.05m x 3.00m	13'3" x 9'8"
Bedroom 3	2.90m x 2.15m	9'5" x 7'1"

DIMENSIONS
PLOTS 7, 55, 56, 58-62, 65, 81-84, 88,
108-110, 113, 114, 125, 126 & 137

Master Bedroom	3.90m x 2.90m	12'8" x 9'5"
Bedroom 2	4.05m x 2.90m	13'3" x 9'5"
Bedroom 3	2.90m x 2.15m	9'5" x 7'1"

Floor plans shown are approximate measurements only. Exact layouts and sizes may vary. All measurements may vary within a tolerance of ± 50mm and are not intended to be used for carpet sizes, appliance sizes or items of furniture. Furniture layouts are indicative only. Kitchen layouts are indicative only, please ask one of our sales executives for further information.